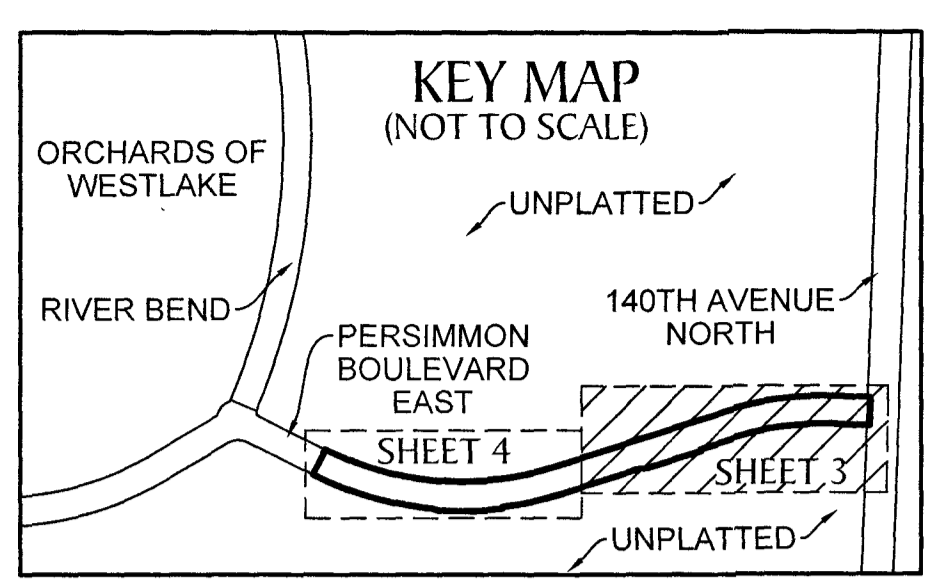


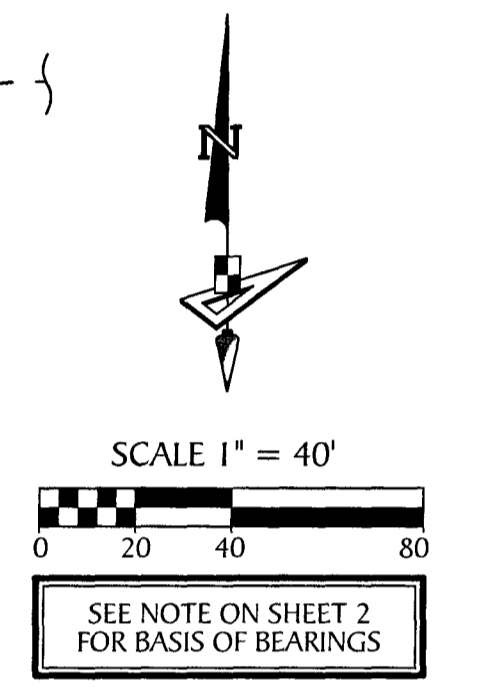
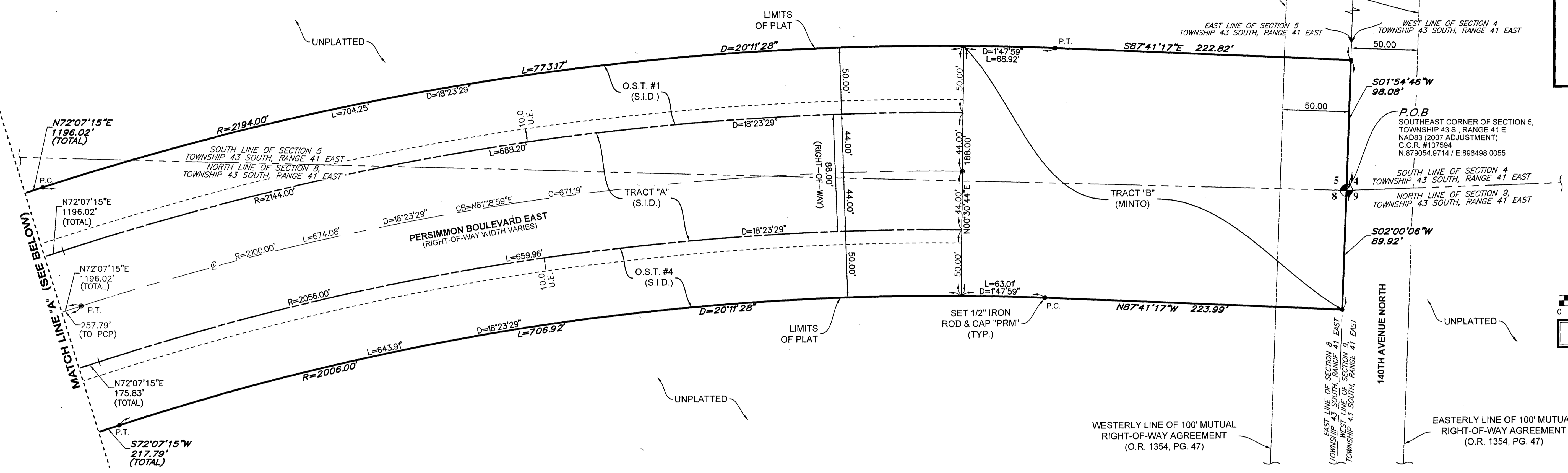
PERSIMMON BOULEVARD EAST - PLAT 6

BEING A PORTION OF SECTION 5, TOWNSHIP 43 SOUTH, RANGE 41 EAST,
AND SECTION 8, TOWNSHIP 43 SOUTH, RANGE 41 EAST
CITY OF WESTLAKE, PALM BEACH COUNTY, FLORIDA

185



32, 33
5, 4
NORTHEAST CORNER
SECTION 5-43-41
NAD83 (2007 ADJUSTMENT)
C.C.R. #107592
N:884731.1793
E:896687.5695



LEGEND

- P.O.B. --- POINT OF BEGINNING
- P.O.C. --- POINT OF COMMENCEMENT
- P.B. --- PLAT BOOK
- R.P.B. --- ROAD PLAT BOOK
- D.B. --- DEED BOOK
- O.R./O.R.B. --- OFFICIAL RECORDS BOOK
- PG./PG(S) --- PAGE(S)
- NAD --- NORTH AMERICAN DATUM
- O.S.T. --- OPEN SPACE TRACT
- P.B.C. --- PALM BEACH COUNTY
- U.E. --- UTILITY EASEMENT
- D.E. --- DRAINAGE EASEMENT
- 7-43-41 --- SECTION-TOWNSHIP-RANGE
- LB --- LICENSE BUSINESS
- S.I.D. --- SEMINOLE IMPROVEMENT DISTRICT
- C.C.R. --- CERTIFIED CORNER RECORD
- PRM --- PERMANENT REFERENCE MONUMENT
- --- PERMANENT CONTROL POINT
- --- FOUND PERMANENT REFERENCE MONUMENT
- 4"x4" CONCRETE MONUMENT WITH 2" ALUMINUM DISK STAMPED "PRM LB 7768" (UNLESS OTHERWISE NOTED)
- --- SET 1/2" IRON ROD AND CAP STAMPED "PRM LB 7768"
- N.T.I. --- NON-TANGENT INTERSECTION
- N.T.C. --- NON-TANGENT CURVATURE
- R --- RADIUS
- L --- ARC LENGTH
- D --- DELTA ANGLE
- CB --- CHORD BEARING
- C --- CHORD
- P.C. --- POINT OF CURVATURE
- P.T. --- POINT OF TANGENCY
- R.C. --- REVERSE CURVATURE
- R/W --- RIGHT-OF-WAY
- ℄ --- CENTERLINE
- (TYP.) --- TYPICAL

THIS INSTRUMENT PREPARED BY
GARY A. RAGER, P.S.M.
LS4628 STATE OF FLORIDA.
GEOPOINT SURVEYING, INC.
4152 WEST BLUE HERON BOULEVARD, SUITE 106,
RIVIERA BEACH, FLORIDA 33404.
CERTIFICATE OF AUTHORIZATION NO. LB7768



4152 W. Blue Heron Blvd.
Suite 106
Riviera Beach, FL 33404
Phone: (561) 444-2720
www.geopointsurveying.com
Licensed Business Number LB 7768